

Hope & Strength

FREE PDF Chart

GLENDON PLACE

Cross-Stitch Designs For The Heirloom Stitcher

NOT FOR RESALE



DESIGNED BY CHERYL GRANDA

Stitching Instructions:

- Design is stitched entirely in full stitches. Design has no backstitching, no partial stitches or specialty stitches. However, there are a total of 1,988 beads.
- Use 2 strands of Dinky-Dyes floss (from the same shank), over 2 threads of fabric. Since Dinky-Dyes hand-dyed floss is variegated in color, it is suggested that you complete each individual stitch before moving on to the next stitch. It is not necessary to do this when stitching with the color 0-Natural.
- Use only 1 strand of Rainbow Gallery Petite Silk Lame' Braid over 2 threads of fabric.
- NOTE: Sullivans/DMC/and Anchor comparables have been provided. However, it is important to realize that these are "best match" colors and may not be exact matches. There is no comparable match for Dinky-Dyes 76-Ocean Grove.
- Order of stitching for best results:
 1. Complete all the floss stitching.
 2. Complete the beading.
- Attach all beads with 1 strand of Sullivans 45410/ DMC 3813/or Anchor 875. Use a half cross-stitch with 1 strand of floss and go through the center of the bead twice to secure before moving on to the next bead. If stitching a cluster of beads, it is only necessary to go through the first and last bead in the cluster twice.

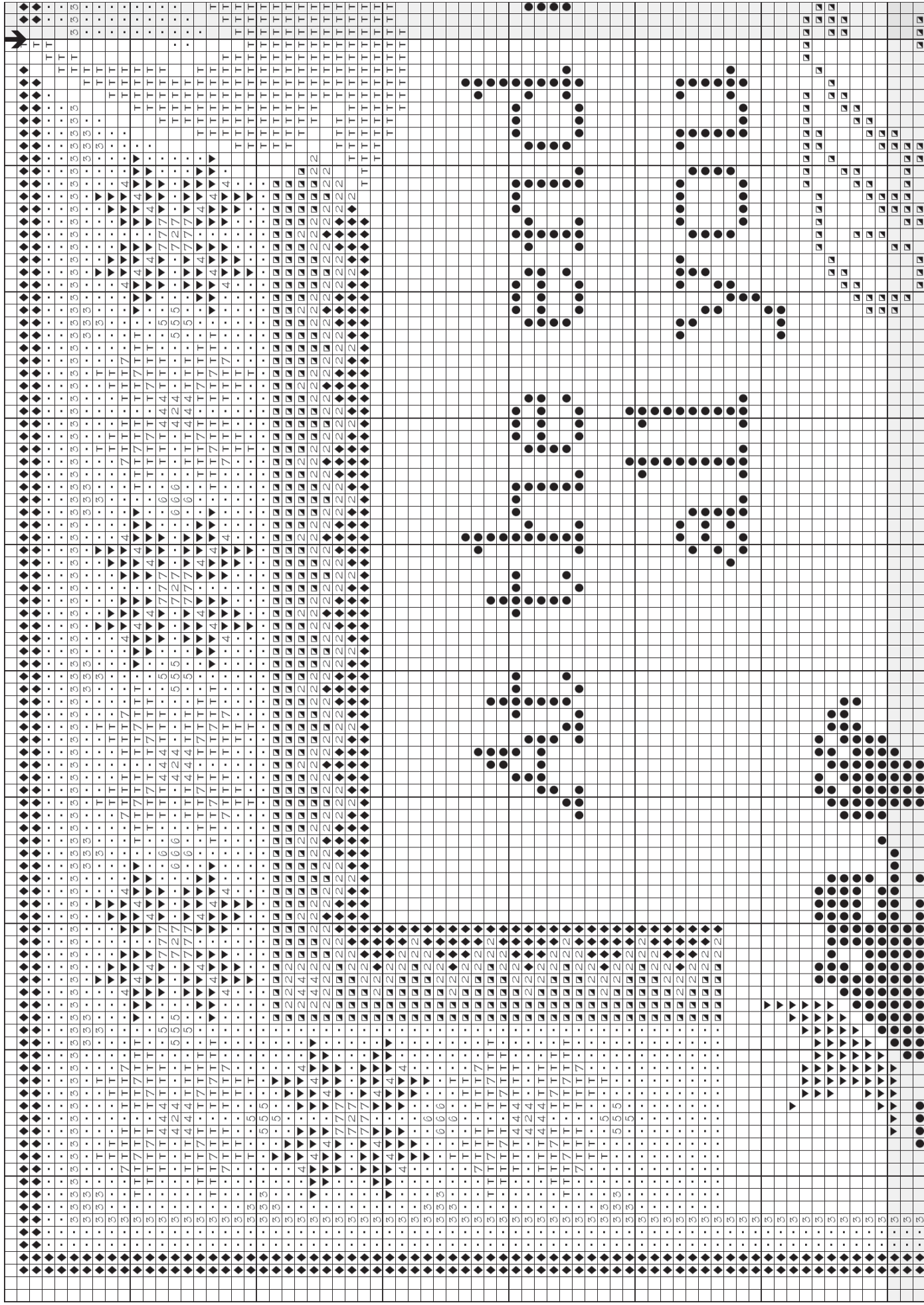
You may make a copy of this design for your own personal use while stitching. However, you may not reproduce, scan, copy, or re-distribute this design in hard copy or as a digital file (on the Internet) under any circumstances without the express written permission of Glendon Place. That includes individual elements of the design, Glendon Place images, charts, instructions or logos.

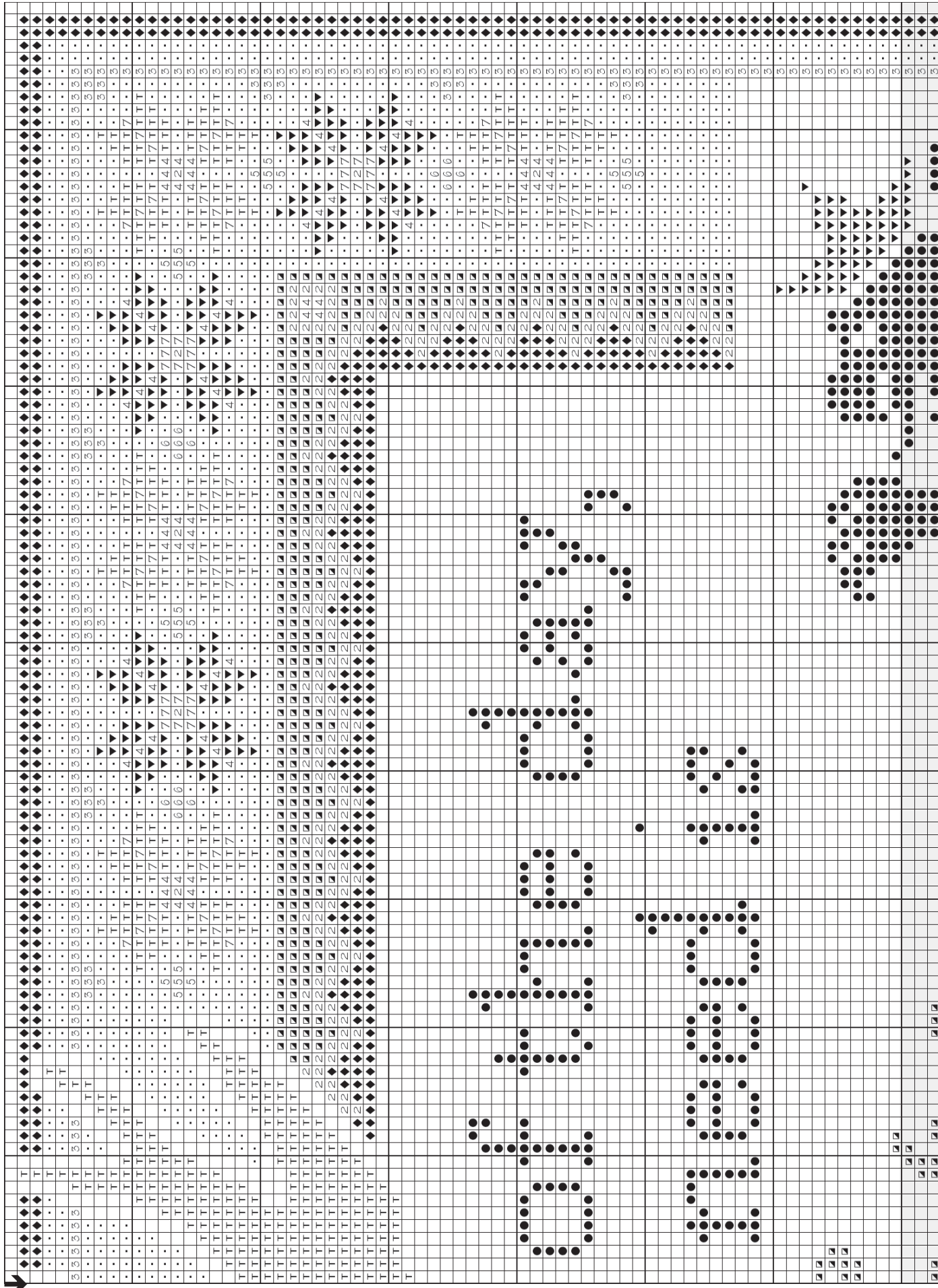
Go to www.GlendonPlace.net and click on Copyright at the bottom of any page to learn how you can help protect needlework copyright. Thank you for supporting Glendon Place designs.

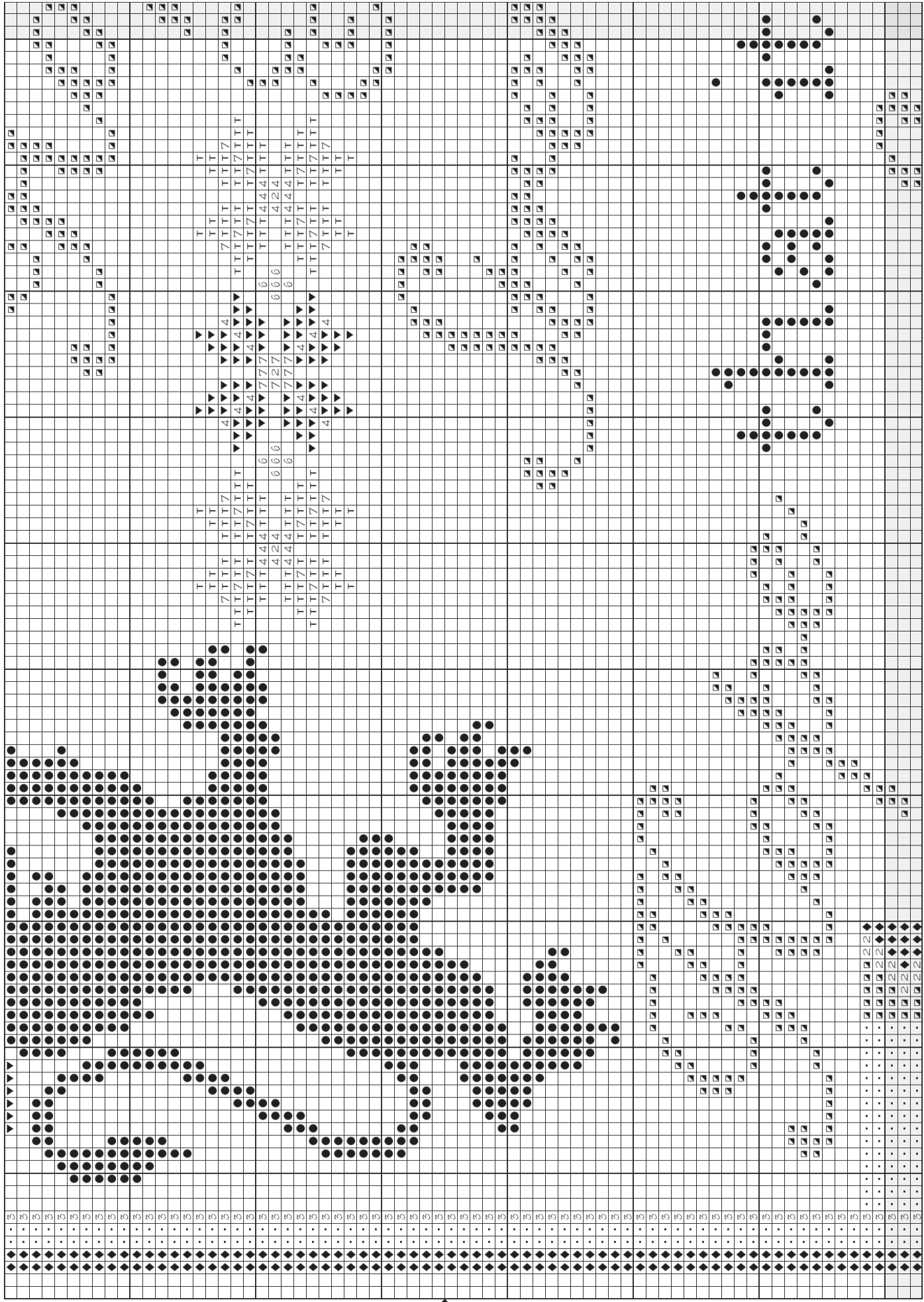


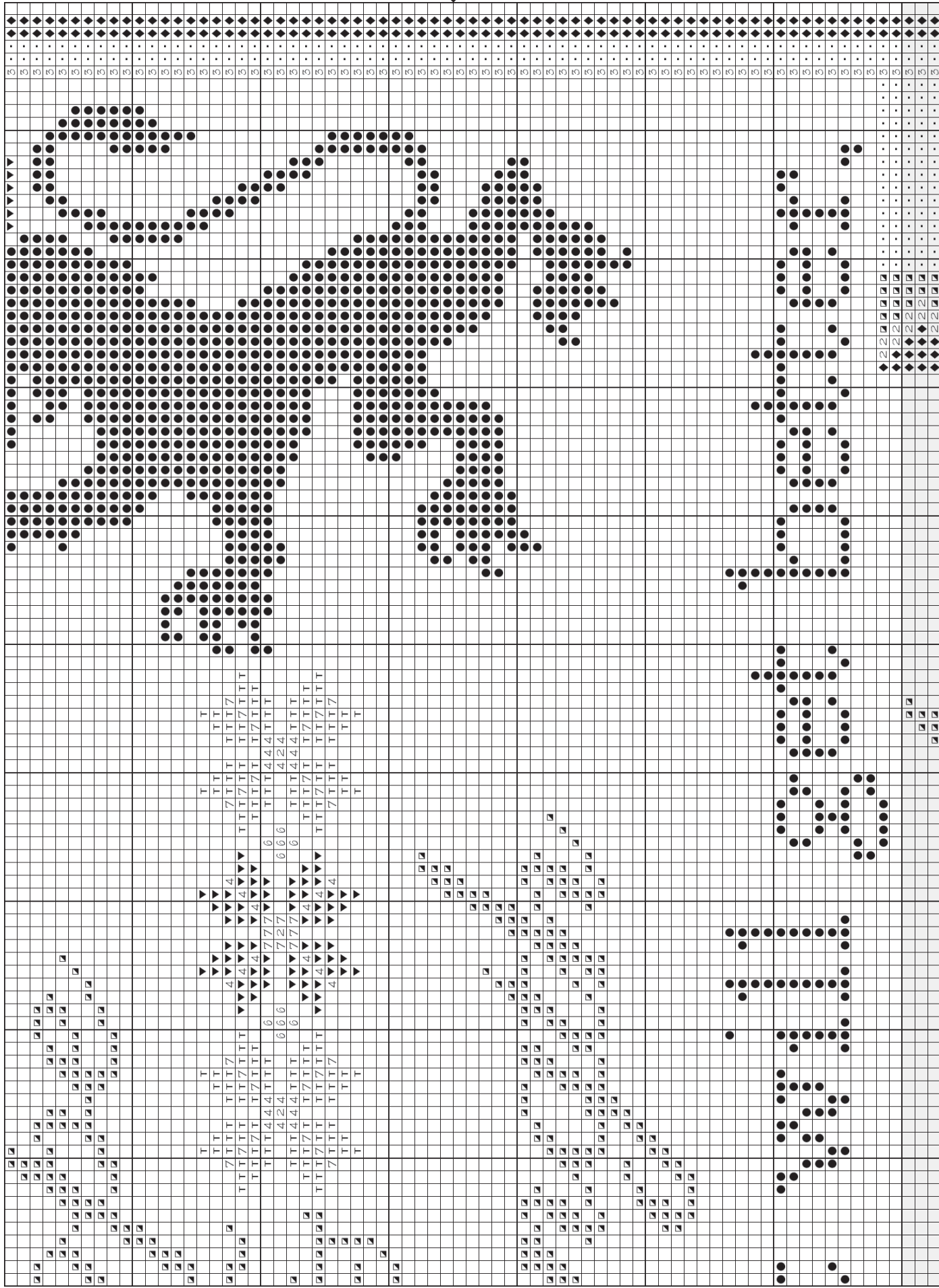
Order of Page Sections

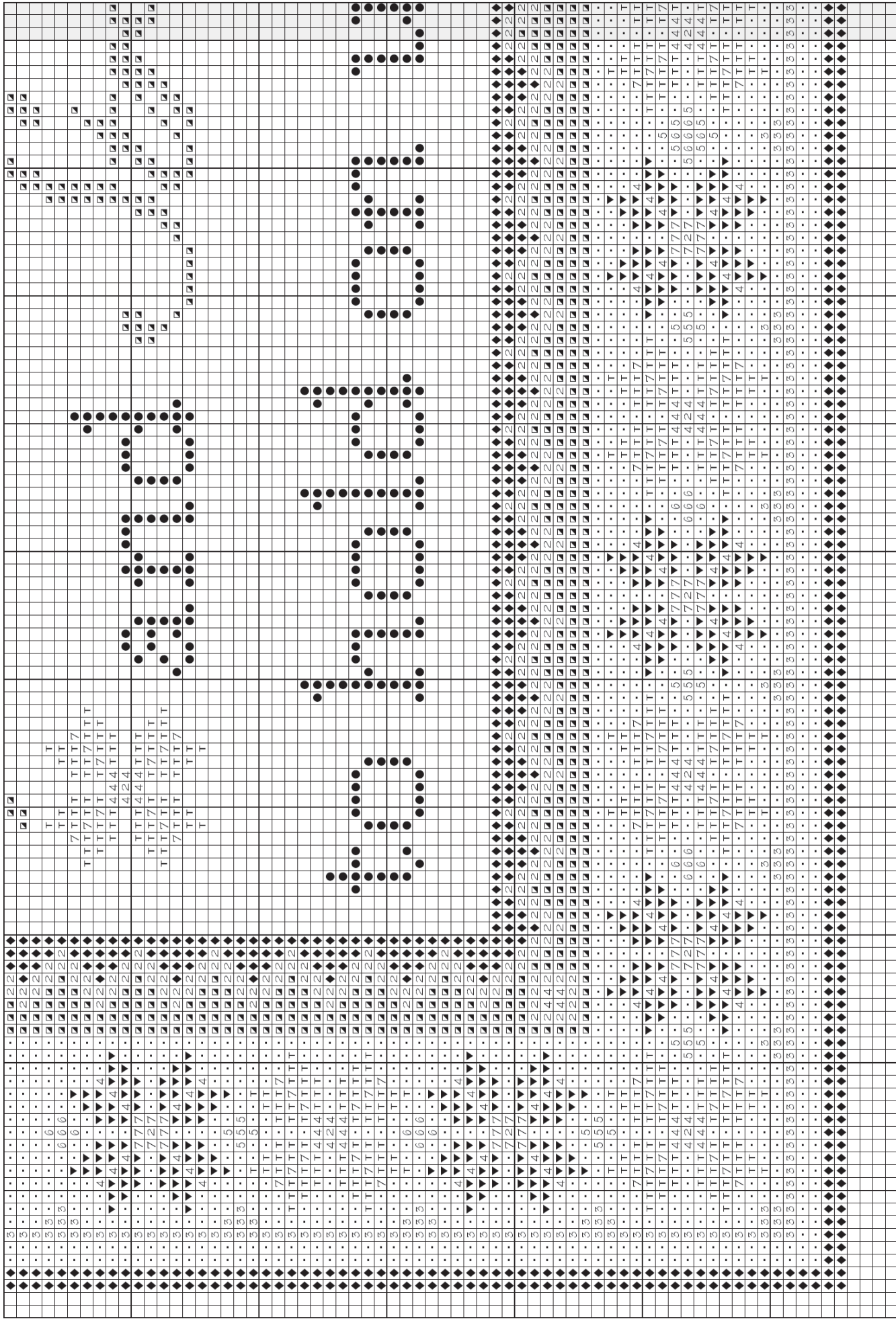
1	2
3	4
5	6

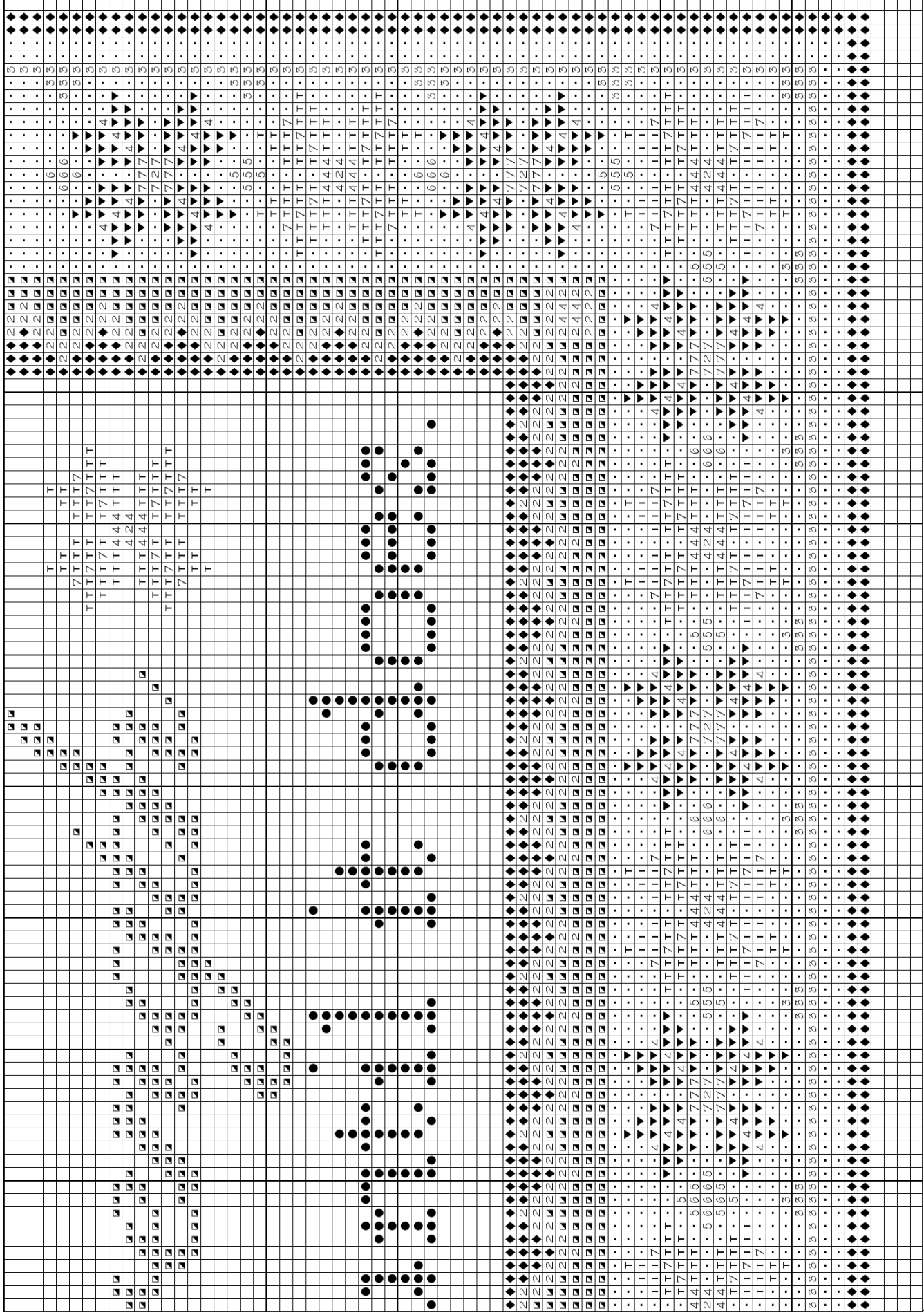












Hope & Strength

Designed by Cheryl A. Granda

The inspiration for Hope & Strength was a direct result of the world-wide Corona Virus (COVID-19) pandemic we are all experiencing. This have been a very challenging, as well as a very scary time for everyone.

It is with a heavy heart that I extend my deepest sympathies to anyone who has been touched by this horrible disease.

I designed Hope & Strength with the intention that it would be a FREE design available to all who have the capability of simply printing it. This is a time when so many of us are stuck in our homes as a result of state and federal mandates and a desire to do our part in not contributing to the spread of the virus. And although I am also spending a lot of time at home, I wanted to do something to help others, if only just a little bit.

May we all find the hope and strength to get through this challenging time together, knowing that we all are united through our needlework.

Thoughts and prayers from my home to yours.

Cheryl Granda

General Information: Stitched using 2 threads of floss over 2 threads of fabric. A total of 6 colors of Dinky-Dyes hand-dyed silk floss, 5 colors of Mill Hill Beads, 1 color of Rainbow Gallery Petite Silk Lame' Braid, and 1 color of Sullivans floss were used in the model.

NOTE: Due to the number of Dinky-Dyes Silk Floss colors required for this design, I have provided Sullivans/DMC/ and Anchor comparable colors to make stitching this design more affordable. However, it is very important to keep in mind that Dinky-Dyes Silks are variegated in color, some more than others. There is one particular color (76-Ocean Grove) that is extremely variegated and has no comparables.

Fabric: Stitched on 32ct Jade Lugana by Picture This Plus.

Stitch Area: 200w X 210h

Stitch Count: 197w X 205h

Design Area: 12-1/4" X 12-3/4". (Purchasing a fat sixth (18" X 18") will work sufficiently, but will only allow approximately 2.5" of selvage on all sides. The model was stitched using a fat sixth and there was plenty of selvage for framing.

Color Chart for Hope & Strength

Symbol	Dinky-Dyes	Color	Sullivans	DMC	Anchor
•	0	Natural (4)	45463 (4)	3865 (4)	2 (4)
●	68	Ocean Pines (2)	45110 (2)	501 (2)	683 (2)
◆	76	Ocean Grove (2)	N/A	N/A	N/A
T	89	Wild Lavender (2)	45041 (2)	209 (2)	96 (2)
▼	119	Kirribilli (1)	45040 (1)	208 (1)	99 (1)
▣	178	Twilight (2)	45067 (2)	334 (2)	978 (2)
Symbol	Sullivans	No. of Skeins	DMC	Anchor	
To Attach Beads	45410	1	3813	875	
Symbol	Mill Hill Bead	No. of Packs	Color		
2	00479	2	White		
4	02008	1	Sea Breeze		
5	02078	1	Wild Plum		
6	02082	1	Opal Hyacinth		
7	03035	2	Royal Green		
Symbol	RB Petite Silk Lame' Braid	No. of Cards	Color		
3	SP99	1	Classic Blue		

NOTE: All of these items can be purchased on the Glendon Place website in the form of an embellishment or thread pack at www.glendonplace.net. These items are also available at most independent needlework shops.

Resources:

- 32ct Jade Lugana provided by Picture This Plus, can be purchased from your local or online independent needlework shop.
- Dinky-Dyes hand-dyed silk floss is available in many independent needlework shops worldwide. Check with your local shop or email kathy.dinkydyes@gmail.net.
- Petite Silk Lame' Braid provided by Rainbow Gallery can also be found in your local or online independent needlework shop.
- Mill Hill Beads provided by Wichelt Imports, Inc. can be purchased at your local or online independent needlework shop.

4317 Glendon Place
Valrico FL 33596
Tel. (813) 653-3556
E-mail: email@glendonplace.net
www.glendonplace.net



"Hope & Strength"
by Cheryl A. Granda
Copyright © 2020 Glendon Place
All rights reserved